

Tin-Pro

Tin-Pro allows to have, in a very simple way, the management and control of any phases in dyeing and finishing.

Tin-Pro is the natural evolution of our previous software that Intex System developed and installed in many companies during last years obtaining very good results; so for this new one all of our experience, that Intex System has accumulated in so many years of hard work and develop of management software, is the key of our success.

This software guarantee the complete integration with all Intex System' systems under Windows operative system.

The total opening toward the world of the Office Automation allows to export all the data in spreadsheets, in internet, to create circular letters personalized, etc. The format of the transparent files absolutely with the environment windows allows the packet to be interfaced with any computer system or machine, (i.e. dosing, specula, microprocessors, etc.).

Purposes

Tin-Pro has as principal purpose eliminate all that documents that serve to the carrying out of the daily job and to hold under control the whole firm, in simple and fast way. During the last years the times of delivery of job are reduced, for which the support of a software able to hurry the daily job in rapid way, and to furnish report in fast times has become strategic for all those firms that want to stay on the market. The software is able to go to cover all the organizational demands of the single departments beginning from the raw material stock to reach the consignment of the commodity furnishing in time real situations and statistics that are easily exportable in internet giving therefore a service that fully satisfies the questions of the final customer.

Colors Management Stock

The form allows the rational coding of all the data of the dyes and the auxiliaries, in way of gather them for class, family, supplier, etc., or to know what those alternative are among them. The complete integration with the management of the recipes allows to have a situation in real time of the existences in stock and the relative engagements for the

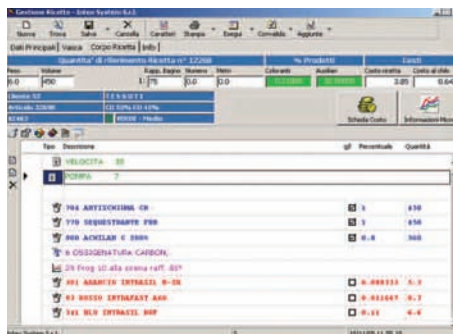
programmed baths.

In any moment inventories and exploitations can be had to a certain date and with varied types of price, (middle, actual, etc.).

Inside the form it is possible to manage and to utter accordingly the orders to suppliers and possession the situation of the ordered products for expiration and the relative valorisation.

Base's Recipes and Baths of Production Management

The form allows to memorize in simple and fast way



BASE'S RECIPES MANAGEMENT

the recipes of base that are studied in the laboratory.

Through the functions of copy, duplication and importation the possibility is had to create your own recipe departing from standard recipes in easy and hasty way.

The recipes memorized in this way they are classified and located among different filters, (Customer, article, color, type dye, composition, etc.).

Particular attention has been given to the recipes costs and to its variations that are monitored in real time. The issue of the baths of production is effected recalling the basic recipe pointing out the weight to dye so that you can re-proportionate the quantities of the recipe.

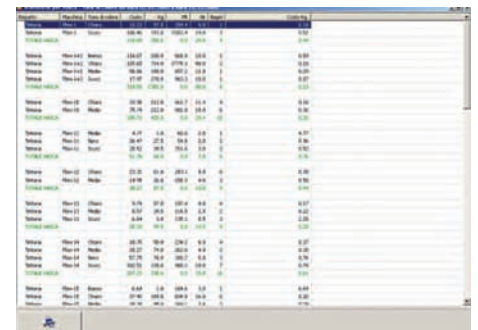
Once effected this operation you have automatically the cost of departure of the programmed bath.

In way as many simple, it is possible to point out the possible additions so that you can have a cost real bath and the product's stock adjoined in exact way.

The complete integration with the stock allows to contemporarily adjourn the existences and the engagements to the issue of the baths and their validation.

Statistics Baths

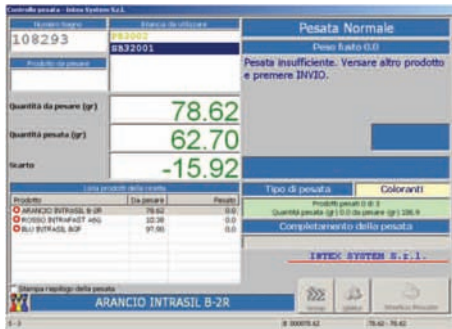
This form allows the monitoring of the production in the dyeing phase furnishing a series of report for customer, machine, article, tones of dye, etc. It is possible to graphically follow the course of the real different costs of dye in comparison to the costs estimated in phase of study of the recipe. It is possible to analyse the incidence of the additions on the total cost of the baths that a lot of times represent an important part of the recipe's cost, but that it escapes manual or semi-manual systems.

A screenshot of the Tin-Pro software interface showing a statistics report for baths. The report is a table with columns for 'Materiale', 'Macchine', 'Articoli', 'Toni', 'Costo', 'Lotti', and 'Data'. The table contains several rows of data. The 'Materiale' column lists various items like '194 ANTISSONIA CR', '170 SOSTANTO F20', '800 ACHILAR 0.800', etc. The 'Costo' column shows numerical values for each row.

STATISTICS BATHS

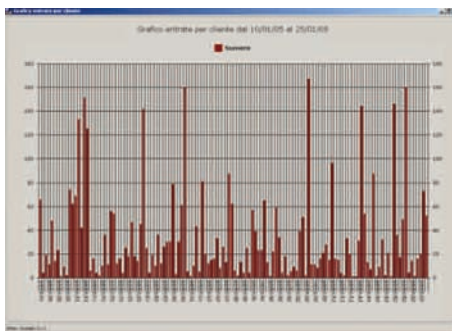
Weight Control

The software allows to avoid any error of weighted interfacing the balances of the weight room with the central computer. In this way it is possible to pilot the user in the weighting operation preventing from being wrong both the quantity, and the product. The program handles to also check that a different product is not weighted by that express train in recipe avoiding so any type of error. With an opportune function it is possible to also additional weight. The stock is adjoined in real time and with the quantity



WEIGHT CONTROL

really weighted and not with the one which is theoretical of recipe. It is also possible to find the histo-



RAW MANAGEMENT STOCK

rical of the real weight.

Raw Management Stock

The form allows the management of the materials in entrance and to follow them in the different phases of workmanship, (raw, prepared, in dye, etc.). Through the recording of the transport's documentation in entrance it sets out the productive trial and the control of the same. The stock management software doesn't furnish only a simple load and unloading of the commodity but it gives in real time the complete integration with the other forms the different existences, engagements and availability of the materials to work. It is possible to manage the stock with all three measurement units, (kg, mt, nr.), and ask for the different existences divided for unity of measure.

In any moment for inventories or situations of stock can be asked to a date or for period.

PLANING MANAGEMENT

Management Working Cards

The form allows to codify all the articles and its own cycles of processing with the single process and the relative settlement of the machine. Once effected such operation the briefcases of accompaniment of the commodity that can be uttered which will follow in all of its phases the materials to work. The flexibility of the used tools allows to easily personalize the form of the briefcase with full satisfac-

WORKING CARD

tion of the customer.

Dispositions and dyeing planing Management

The form allows to memorize all the dispositions of the different customers and plan the job in dyeing factory in a rapid and simple way. The association of the dispositions to the dyeing recipes is automatically done as the signalling of possible new colours to study in the laboratory. The dispositions can be recalled in different ways, (customer, type dyeing machine, type color, etc.), this allows to always have a complete and precise list of the job to develop in dyeing factory. The planning of the dyeing machines, through the function of "dragging" of windows, it is very simple and it allows to plan the job in few minutes.

In any moment you can recall the dispositions of which the raw stock doesn't exist so that you can solicit the delivery from the customer.

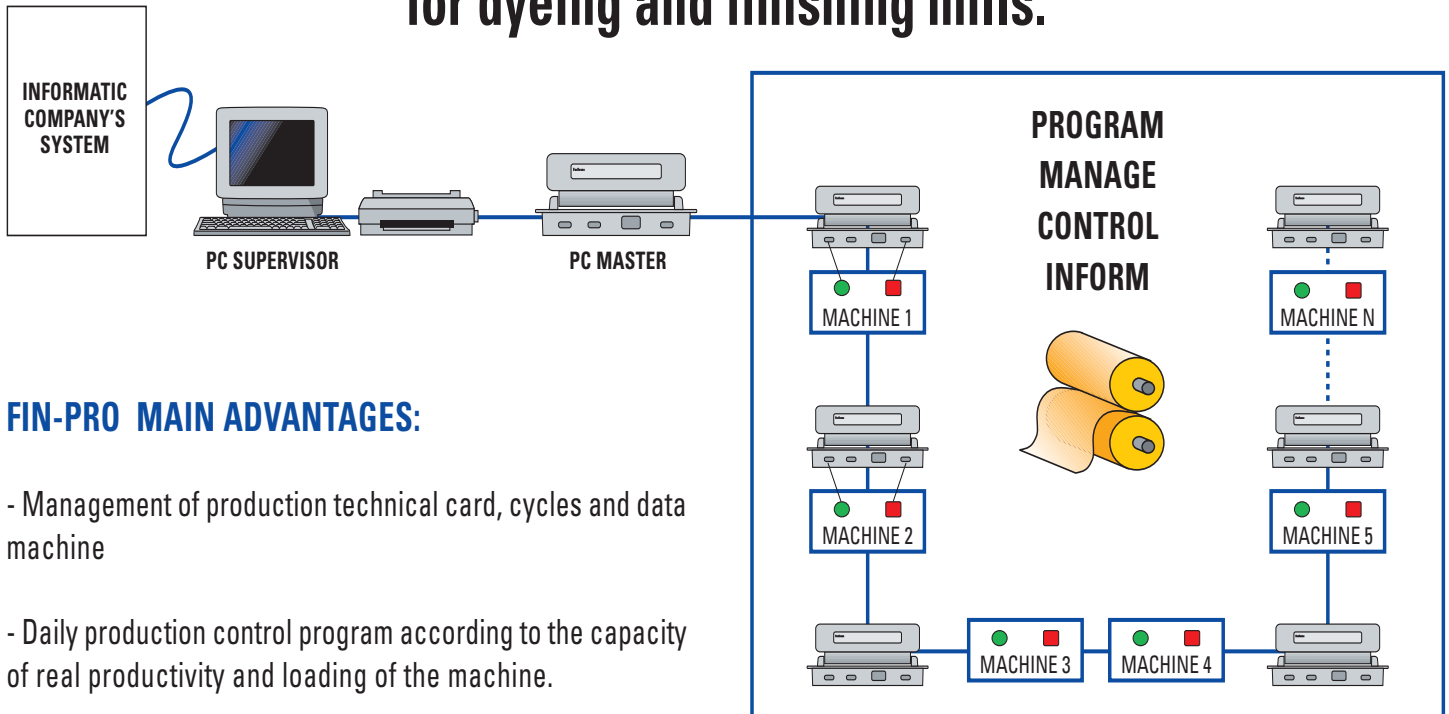
Advantages

In conclusion we want recapitulate synthetically some advantages of Tin-Pro.

- Pleasant and intuitive graphic of simple impact for the operator.
- Maximum transparency and possibility to be interface with other systems.
- Possibility to export the data in Internet.
- Control of the recipes costs by estimation or survey.
- Control of the commodities in entrance and location in different processing phases.
- Stocks always adjoined in real time.
- General vision of the job to be developed and, therefore, ability of precise answers to the customers.
- Reduction of the times of job for the memorization and the issuing of the daily documents.
- Flexibility of the forms so that you can offer report and personalized situations.

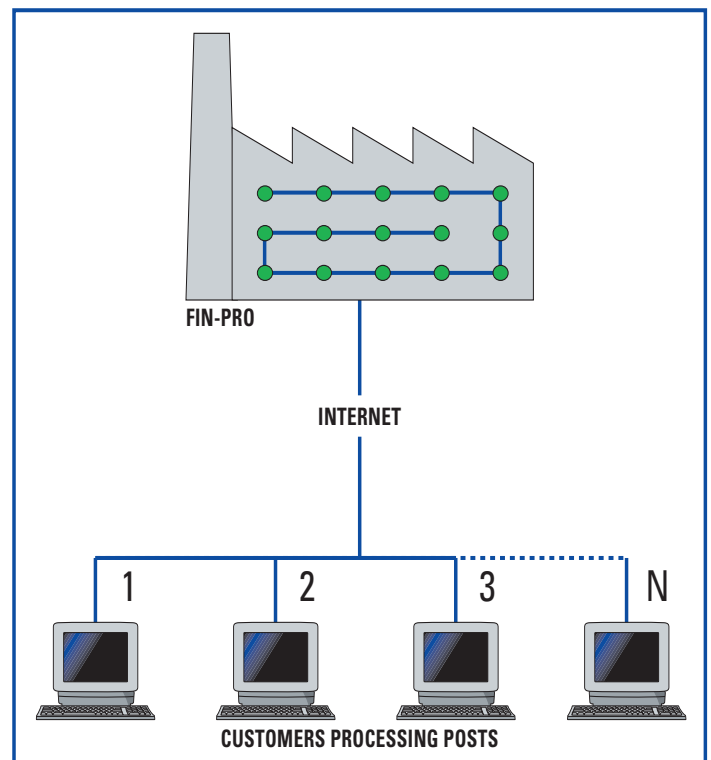


Production monitoring system in real-time for dyeing and finishing mills.



FIN-PRO MAIN ADVANTAGES:

- Management of production technical card, cycles and data machine
- Daily production control program according to the capacity of real productivity and loading of the machine.
- Gathering control system of the production per machine and productive area.
- Interfacement with machines to manage and/or to control in respect of quality.
- Production's data for sale dept.
- Data bank in real time to inform the customer via internet.
- Intex System total management system or interfacement with others system.
- Tailoring according to customer's needs.



FIN-PRO LAST GENERATION SYSTEM

intex system

intex system s.r.l.
via guido rossa, 4 59100 prato
tel. 0574 639613 fax 0574 630481
info@intexsystem.it www.intexsystem.it

Integrated management system
in dyeing and finishing

